

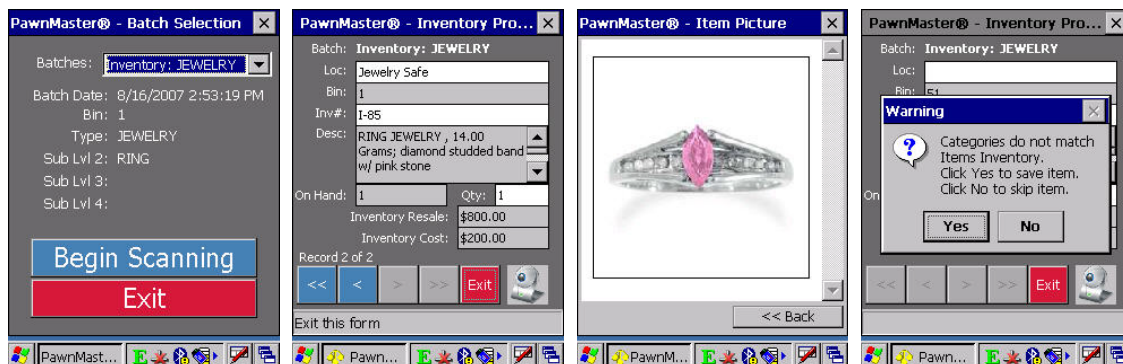
## **PawnMaster<sup>®</sup>**

### ***Real-Time Mobile Physical Inventory***

**PawnMaster<sup>®</sup>** now has the ability to perform inventory scanning using **Symbol** and **Datalogic** PDA scan guns with our **Real-Time Physical Inventory** module. This will allow our customers to quickly and easily take stock of their current inventory items by scanning their barcode labels directly into a SQL database. Included with this functionality are cost threshold, category, and bin flag messages on the scan guns to inform users of items that do not match the specific details of the particular items batch they are scanning into. **Real-Time Physical Items Discrepancy** reports will further notify our customers of items not completely matching up with these details. This functionality will dramatically cut down on pilferage, make inventory recording much more user-friendly, and allow shop owners the means to run a tighter ship and allow greater customer satisfaction.

The **Windows<sup>®</sup> CE<sup>®</sup>** operating system handles all of the gun's work via the integrated **PawnMaster<sup>®</sup>** application. Touch-screen technology is built-in, allowing the use of a handy pen device or even your fingers to do any work not specifically handled by scanning. Functional keyboards also exist on the scan guns to help with any editing of scanned data.

With quick selection of **Batches** setup in **PawnMaster<sup>®</sup>**, pre-processed **PawnMaster<sup>®</sup>** data is immediately viewable upon scanning **Inventory**, **Pawn/Buy**, and **Layaway** items. These scanned items will contain all of the most vital data directly from their **PawnMaster<sup>®</sup>** records for you to see after scanning, along with the ability to see item pictures when available simply by clicking a web-cam icon. Numerous flag messages will display based on **PawnMaster<sup>®</sup>** settings, helping with the scanning of the correct items into the correct **Batches**, making your job that much easier!



**Data Age Business Systems** seeks to make running your pawnshop as easy and as profitable as we can! With the service and support we provide, all included in the **PawnMaster<sup>®</sup>** price, the operation of your shop or multi-store operation can be even simpler with the addition of the wireless **Real-Time Mobile Physical Inventory** technology that we can provide. Just setup your wireless routing system within your shop, storeroom, or warehouse, start scanning, and see the results in your integrated reports! It's as easy as transaction a pawn, buying an item, or selling one in **PawnMaster<sup>®</sup>**.

Contact your **Data Age Sales** representative @ 1(727) 582-9100 for further information regarding the **PawnMaster<sup>®</sup> Real-Time Physical Inventory** module.